

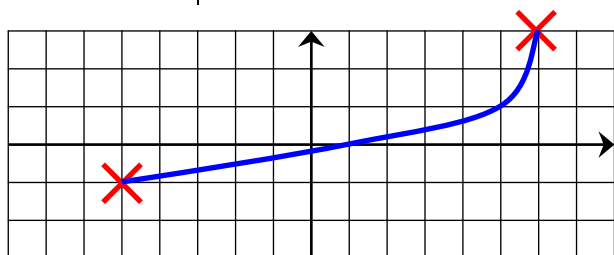
**CORRIGE – NOTRE DAME DE LA MERCI**

**EXERCICE 5A.1 MONTPELLIER**

Compléter le tableau de variation de  $f$ , puis tracer une courbe qui pourrait être celle de  $f$ .

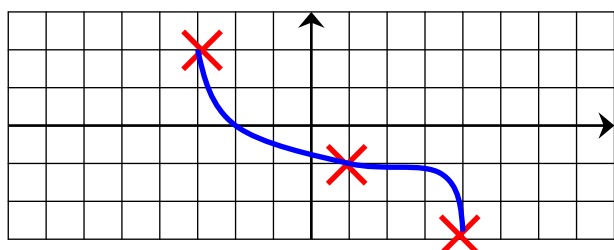
a.

$x$	-5		6
$f'(x)$		+	
$f(x)$	-1		3



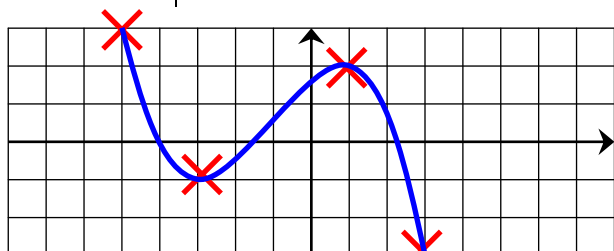
b.

$x$	-3	1	4
$f'(x)$	-	0	-
$f(x)$	2	-1	-3



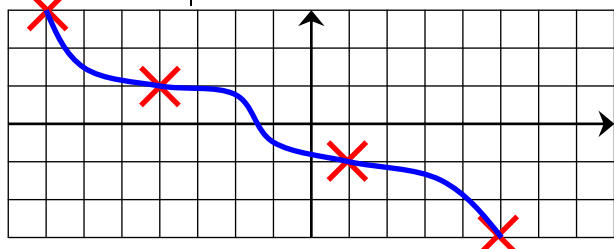
c.

$x$	-5	-3	1	3	
$f'(x)$	-	0	+	0	-
$f(x)$	3	-1	2	-3	



d.

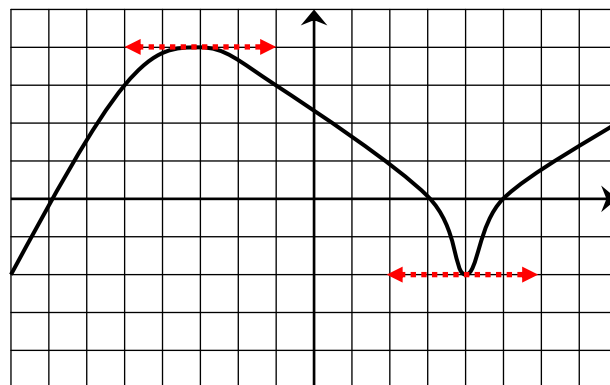
$x$	-7	-4	1	5	
$f'(x)$	-	0	-	0	-
$f(x)$	3	1	-1	-3	



**EXERCICE 5A.2**

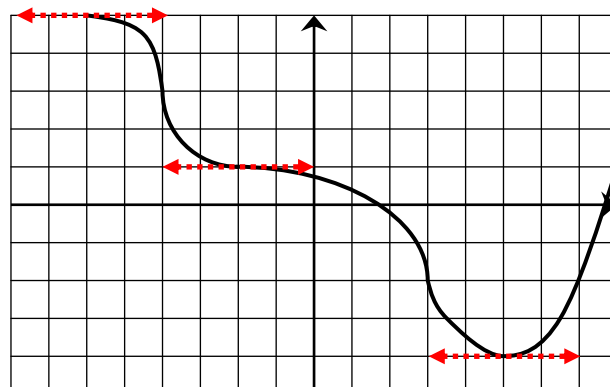
Dresser le tableau de variation complet de chaque fonction à partir de sa courbe.

a.



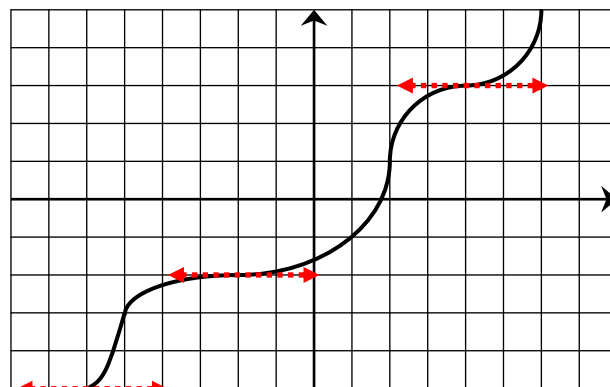
$x$	-8	-3	4	8	
$f'(x)$	+	0	-	0	+
$f(x)$	-2	4	-2	2	

b.



$x$	-6	-2	5	8		
$f'(x)$	0	-	0	-	0	+
$f(x)$	5	1	-4	1		

c.



$x$	-6	-2	4	6		
$f'(x)$	0	+	0	+	0	+
$f(x)$	-5	-2	3	5		