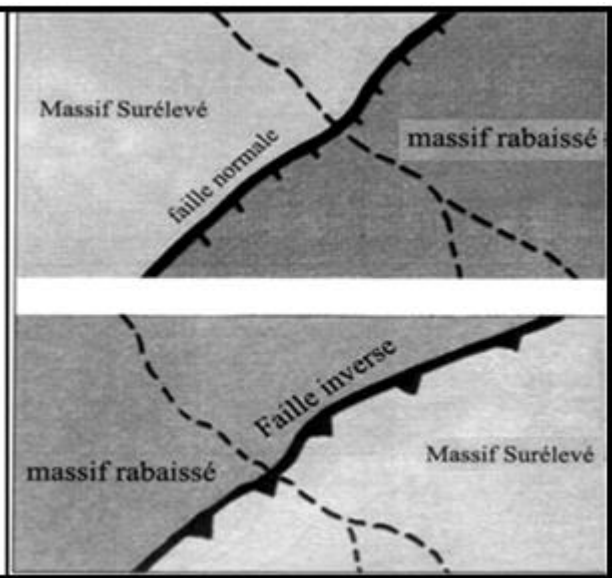
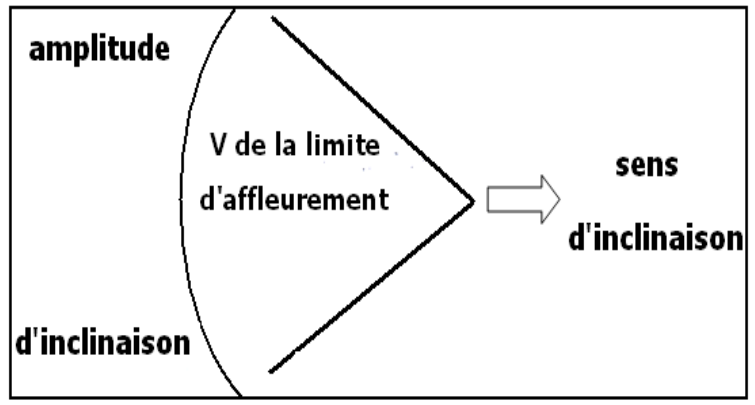
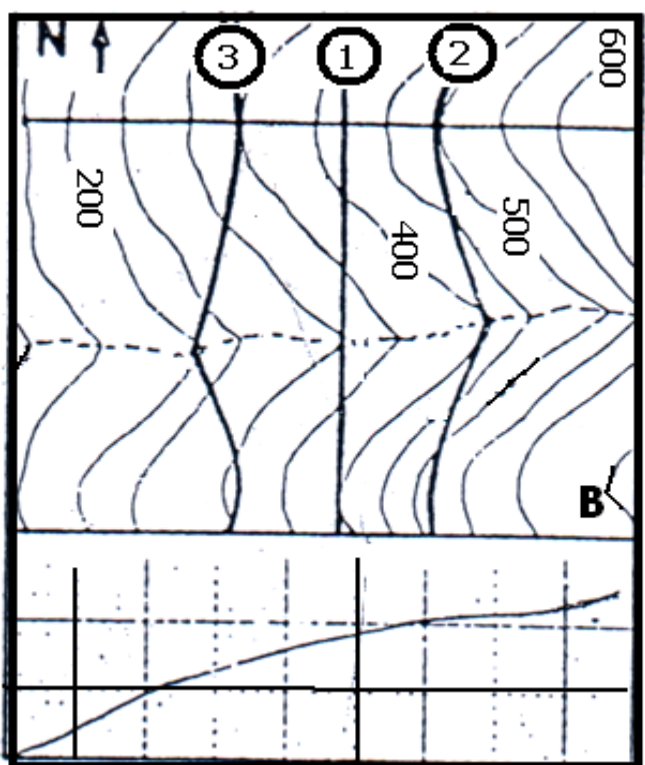
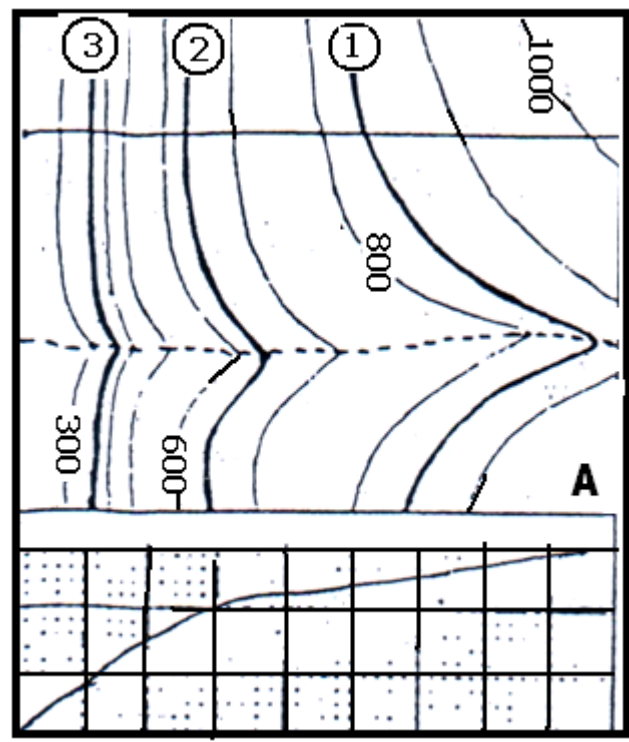
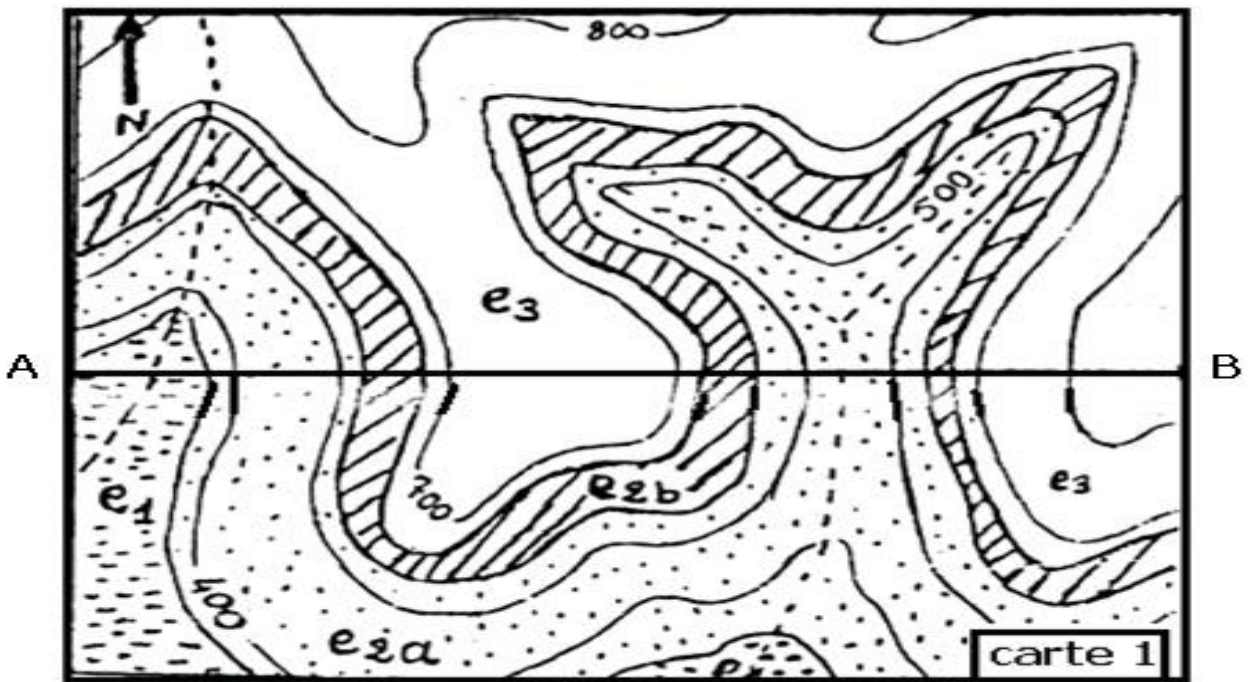
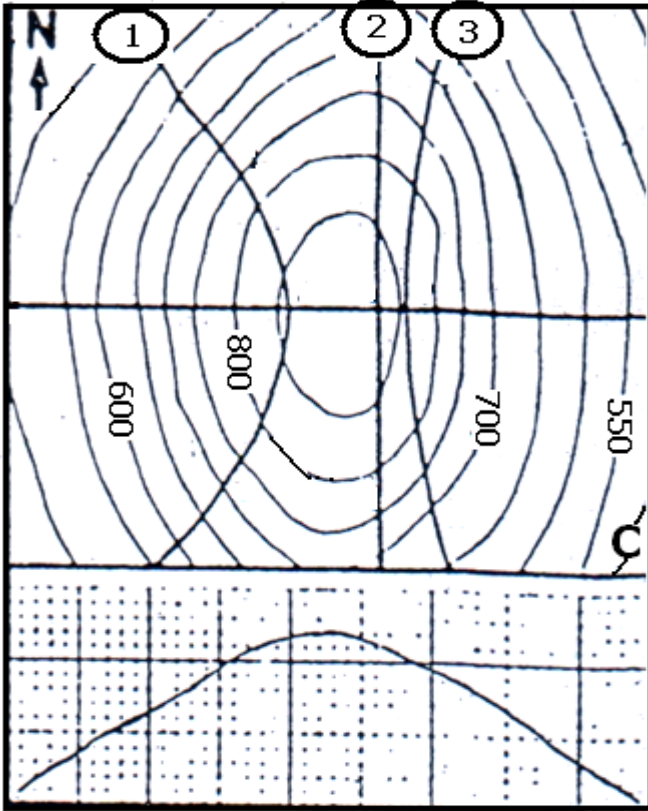
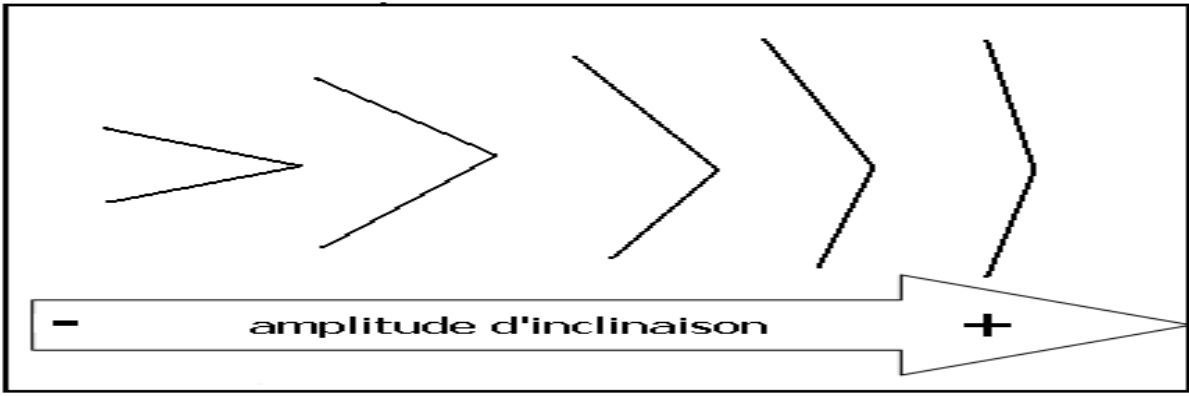


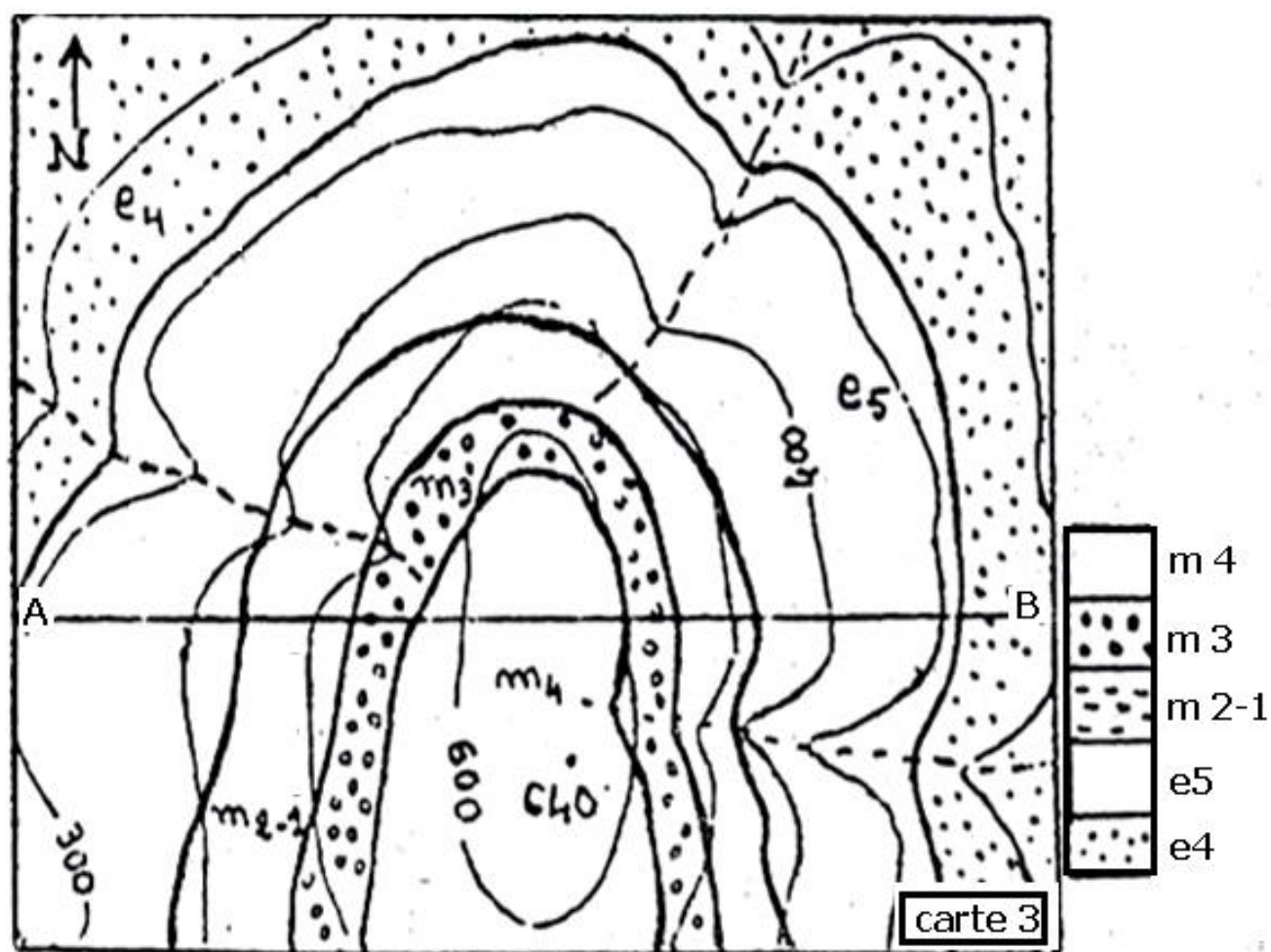
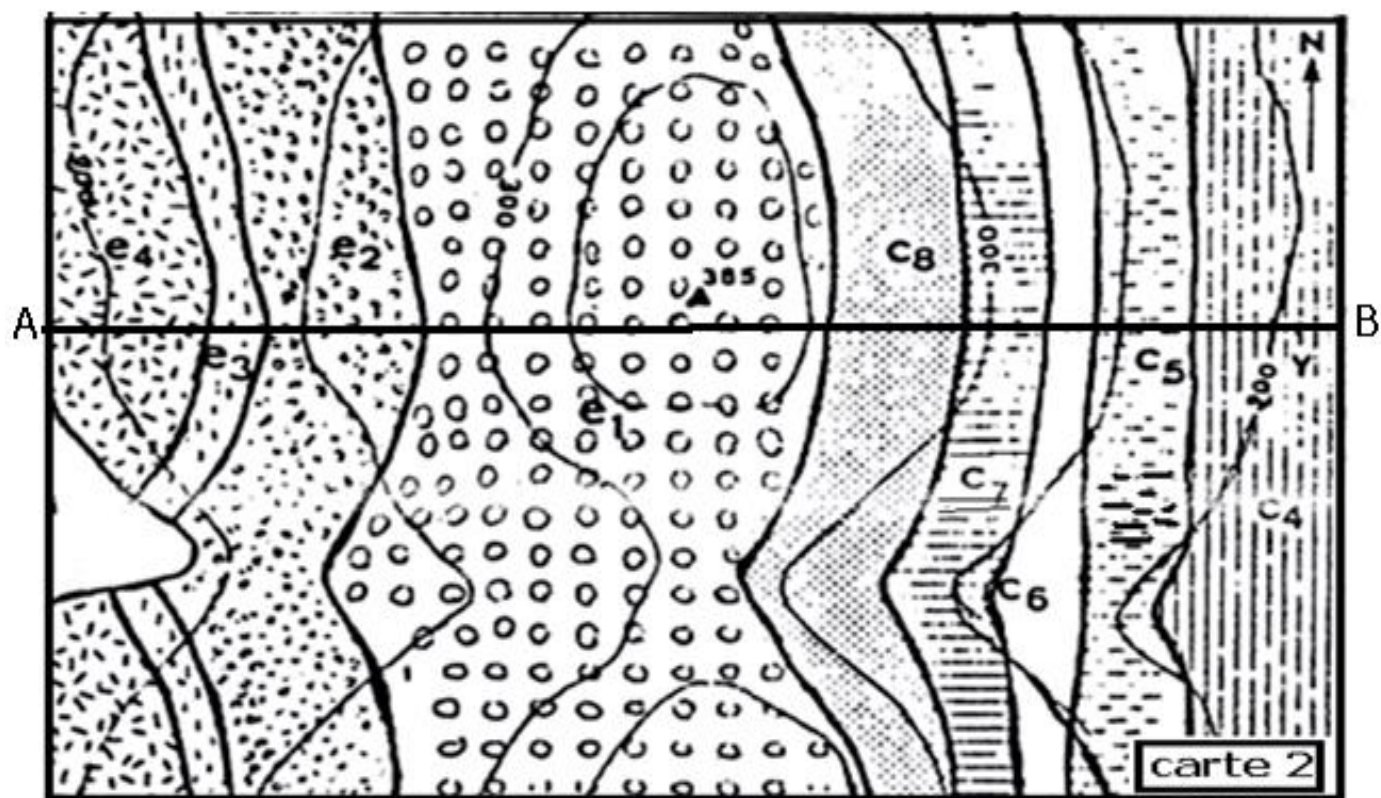
Roches	Symbole
Calcaire	
Dolomite	
Argile	
Marne	
Grès	
Conglomérat	
Sel	

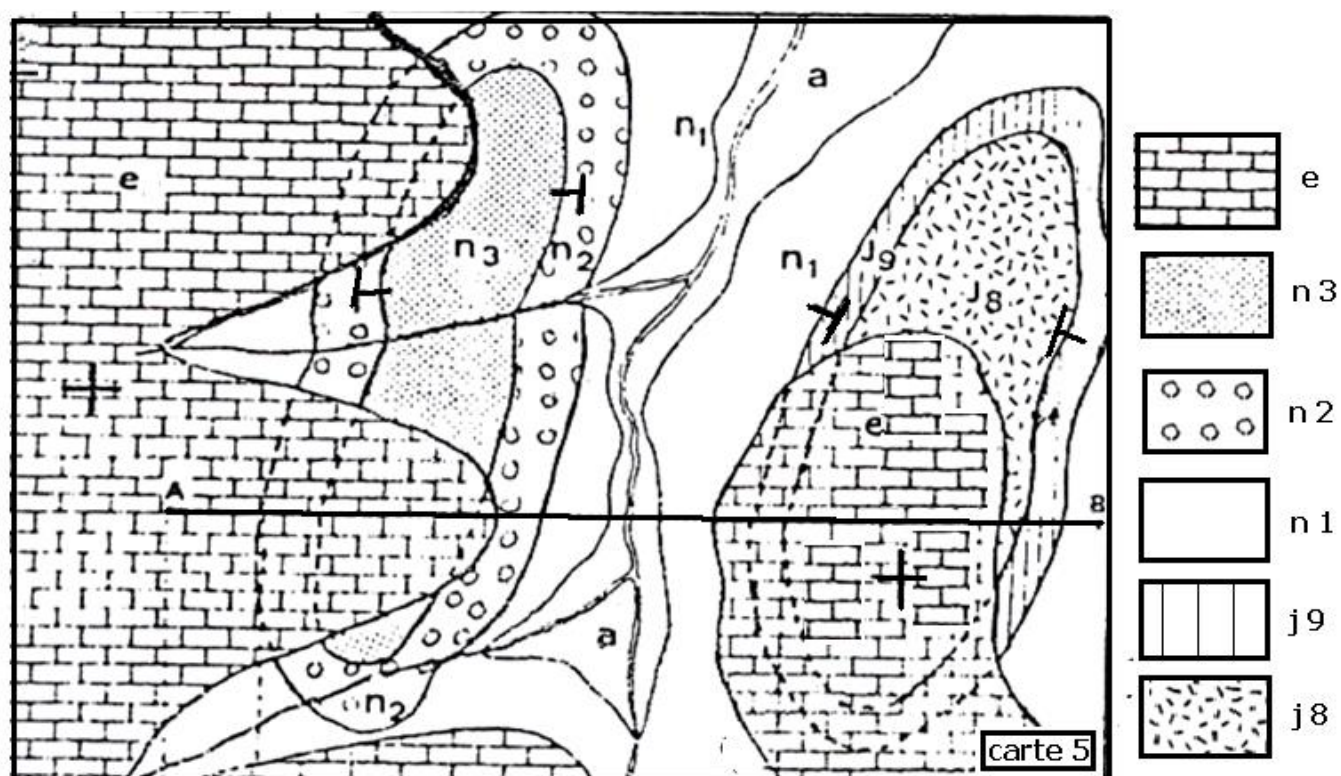
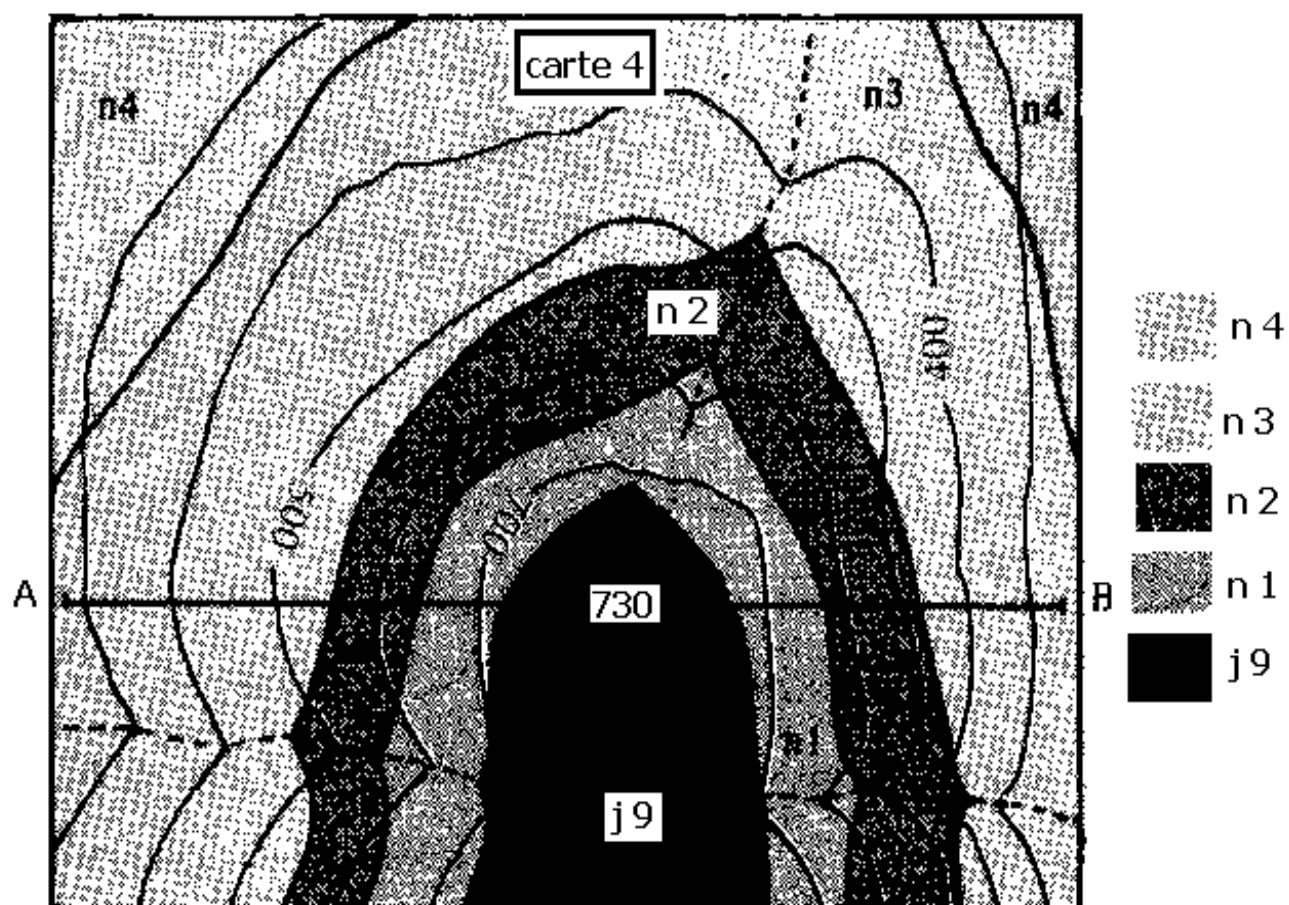


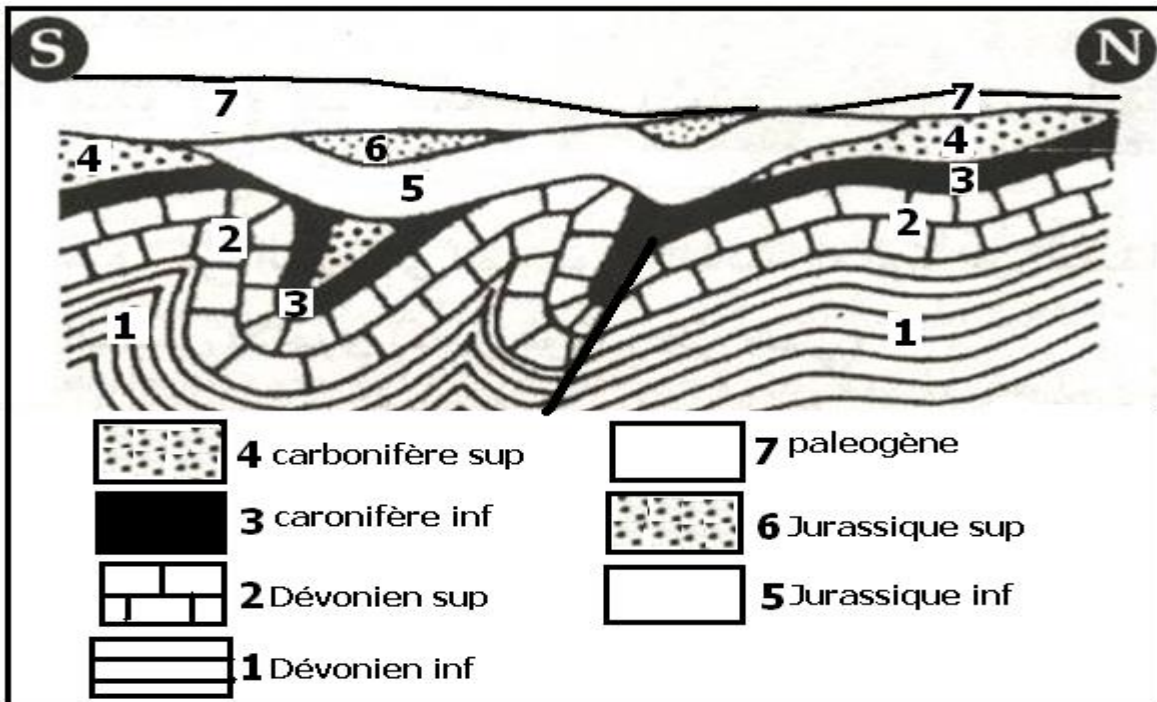
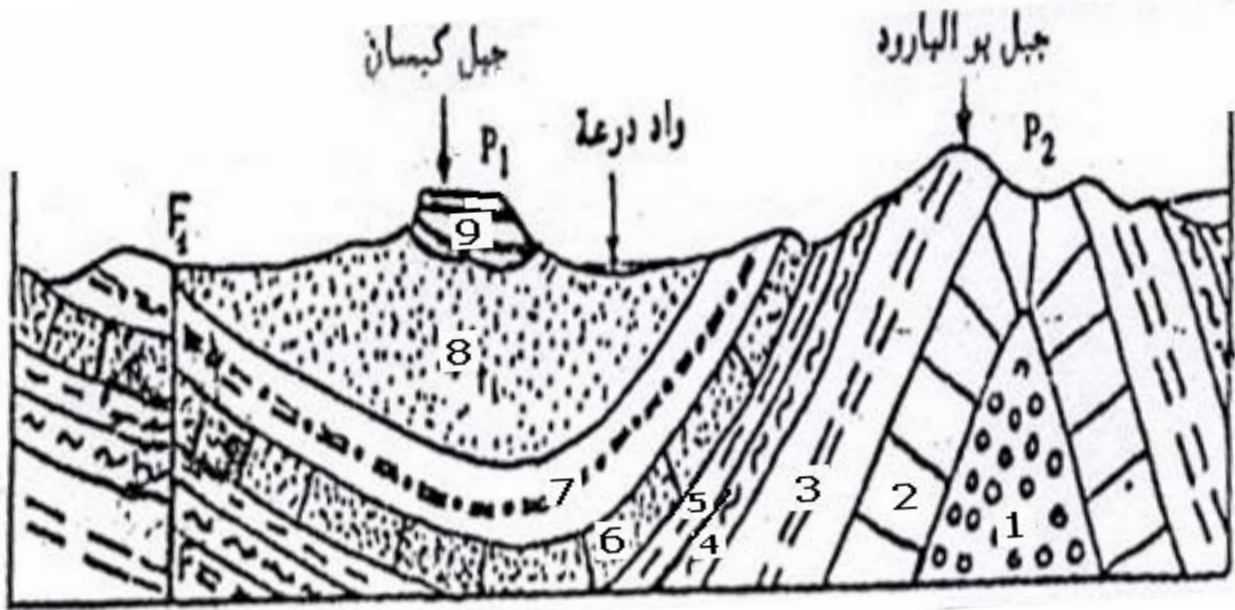
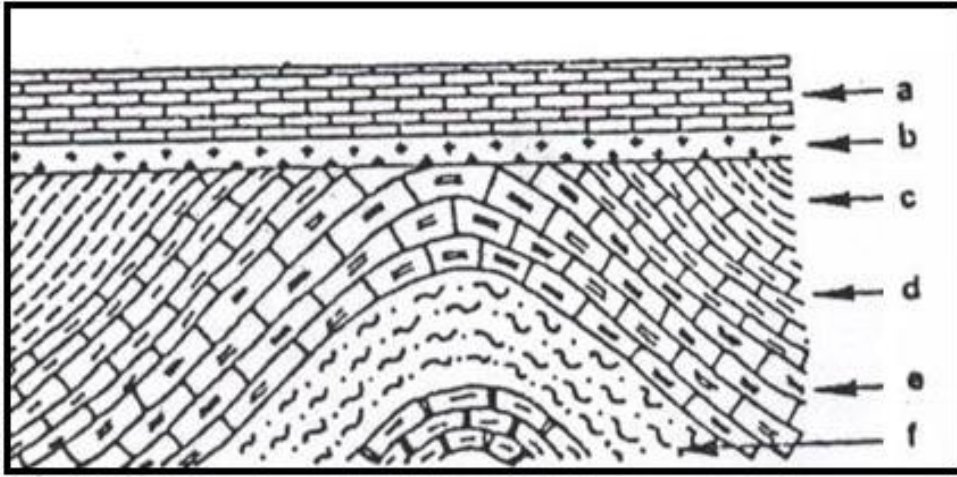
Degré d'inclinaison	Symbole
Inclinaison nulle $\hat{\alpha} = 0^\circ$	
Faible Inclinaison $10^\circ \rightarrow 30^\circ$	
Inclinaison moyenne $30^\circ \rightarrow 60^\circ$	
Forte Inclinaison $60^\circ \rightarrow 80^\circ$	
Inclinaison verticale $\hat{\alpha} = 90^\circ$	
Inclinaison inversée $\hat{\alpha} > 90^\circ$	



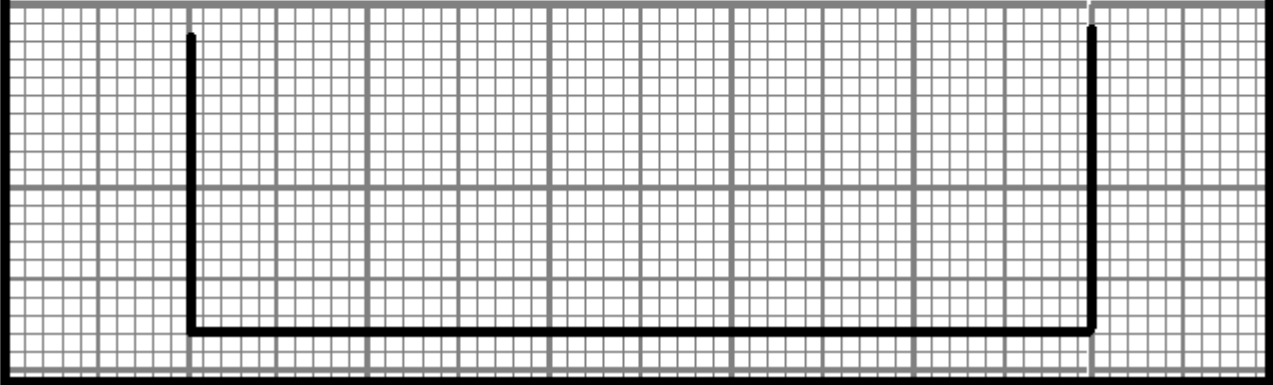
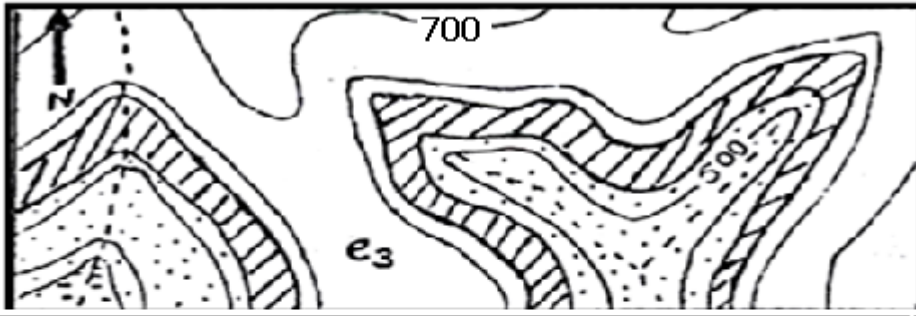




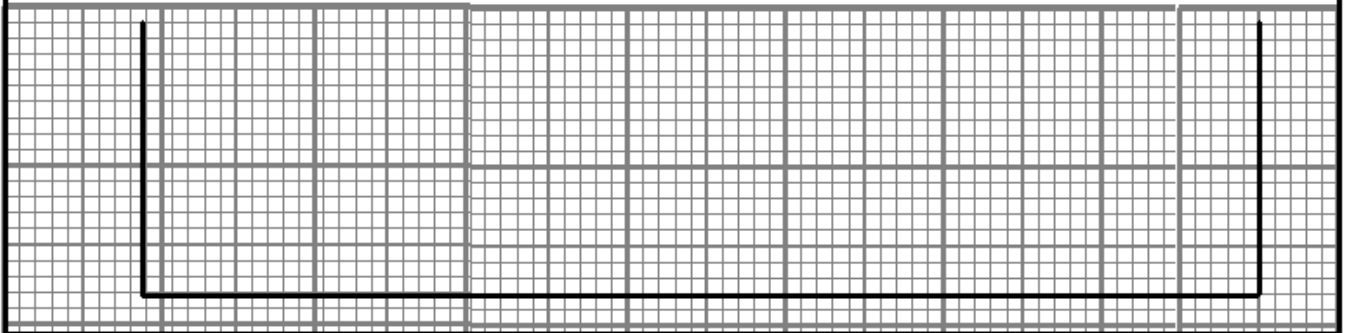
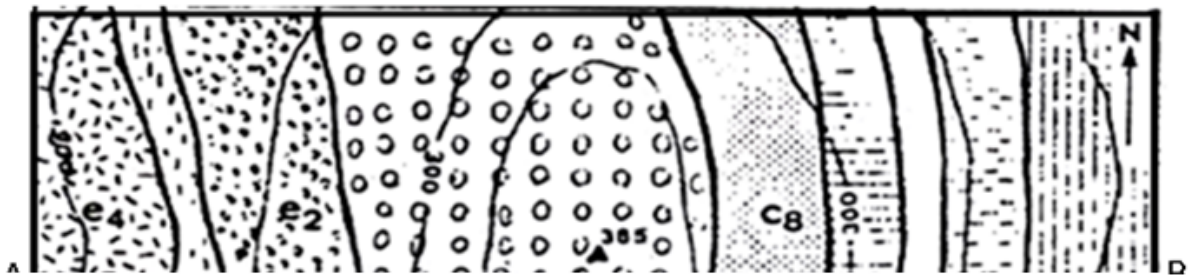




1/100000



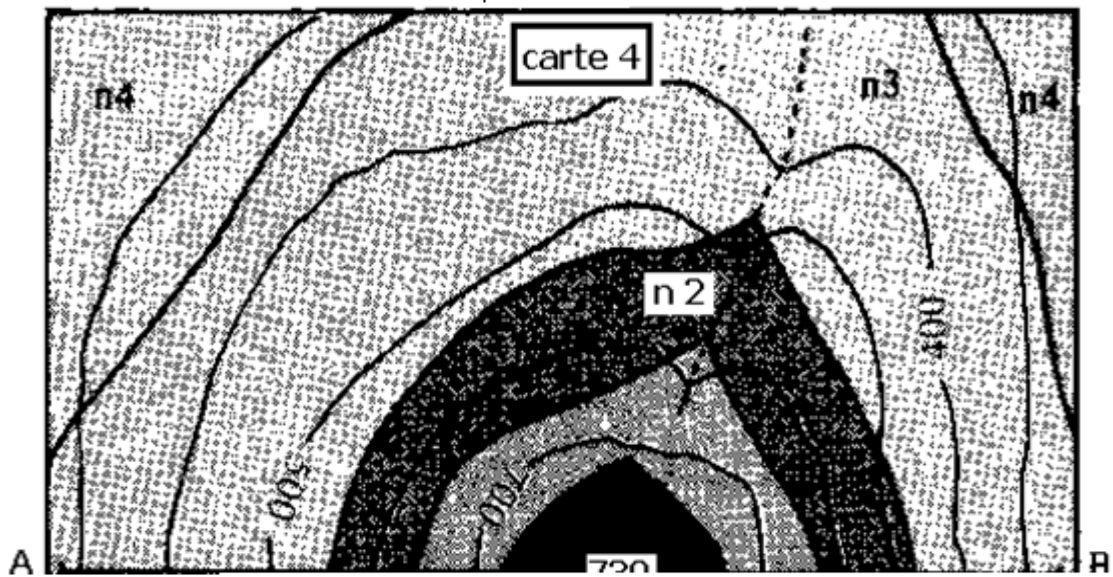
1/100000

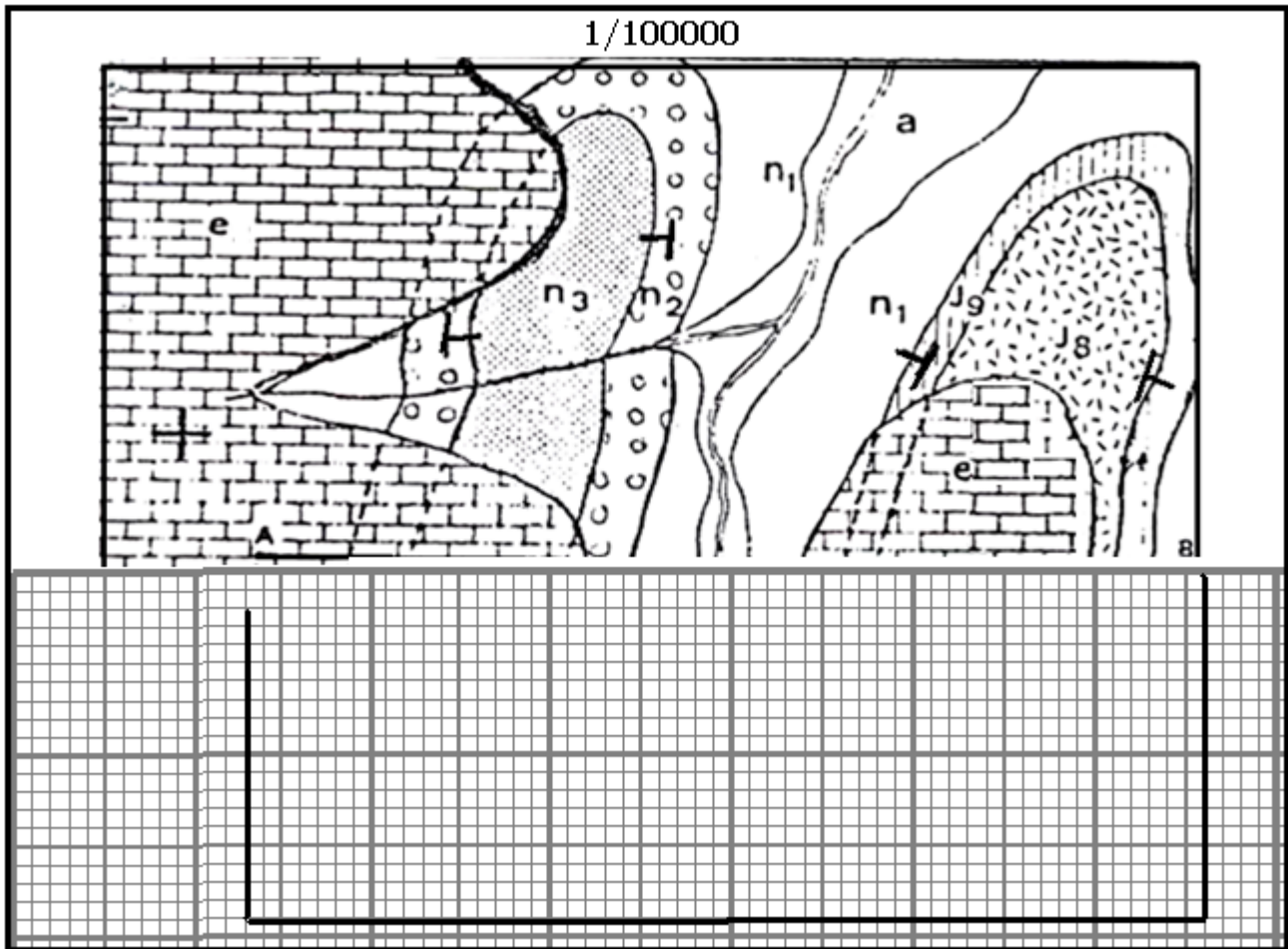


1/100000



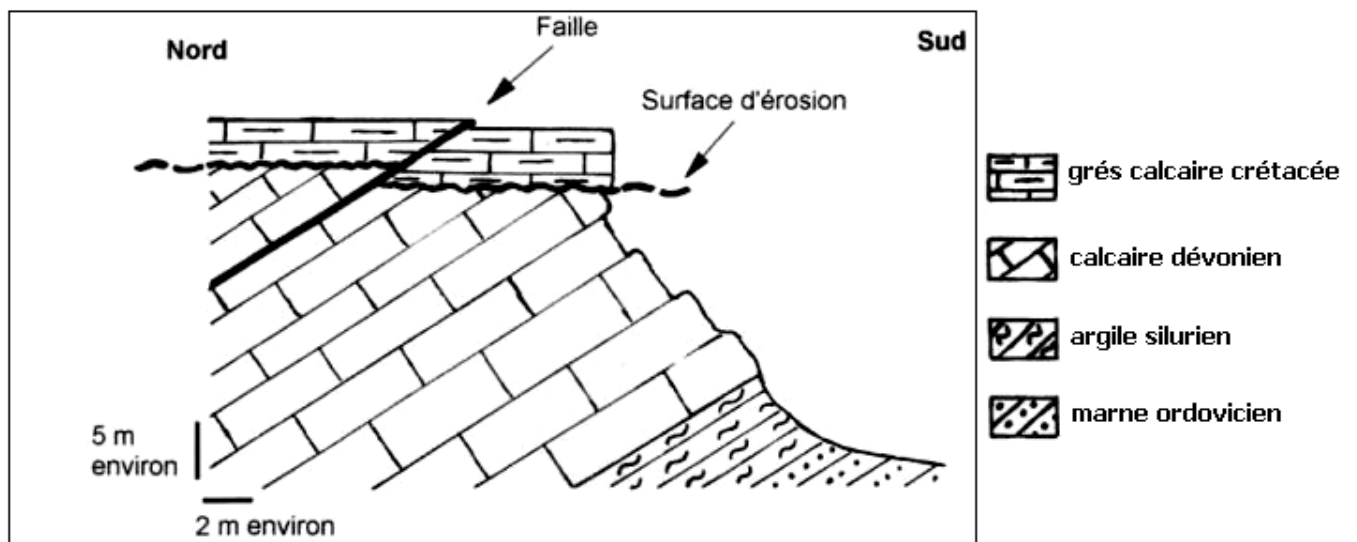
1/100000





EXERCICE

Le document suivant représente une coupe géologique simplifiée d'une région :



- 1- Donner les structures tectoniques présentes dans la région ?
- 2- Donner l'âge relatif de ces structures l'une par rapport à l'autre ?
- 3- Donner l'histoire géologique de la région ?