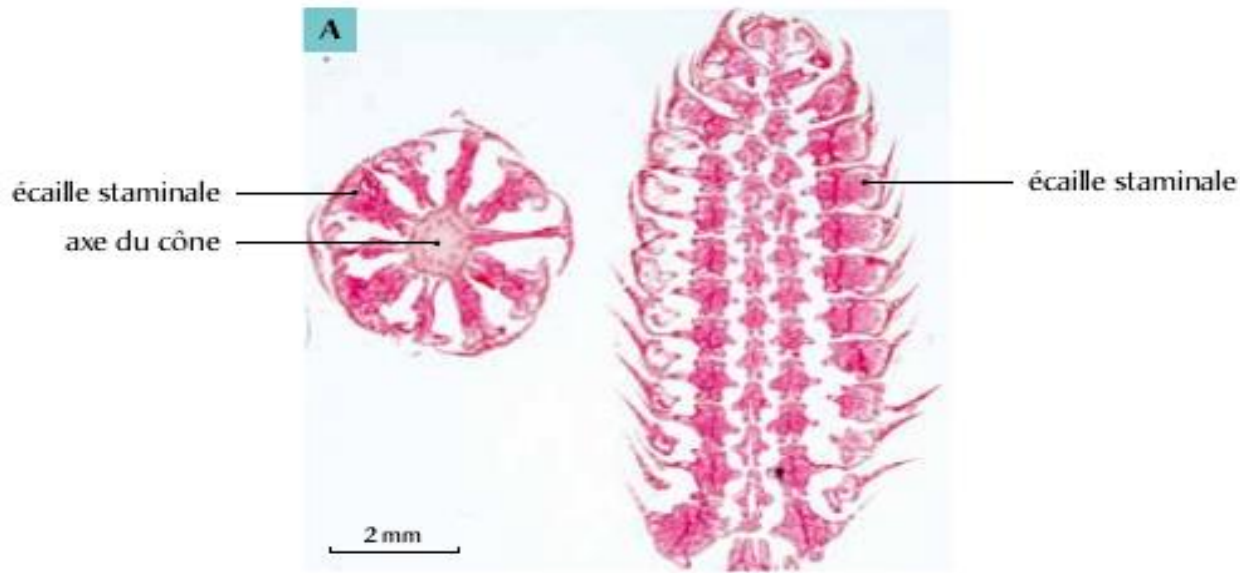
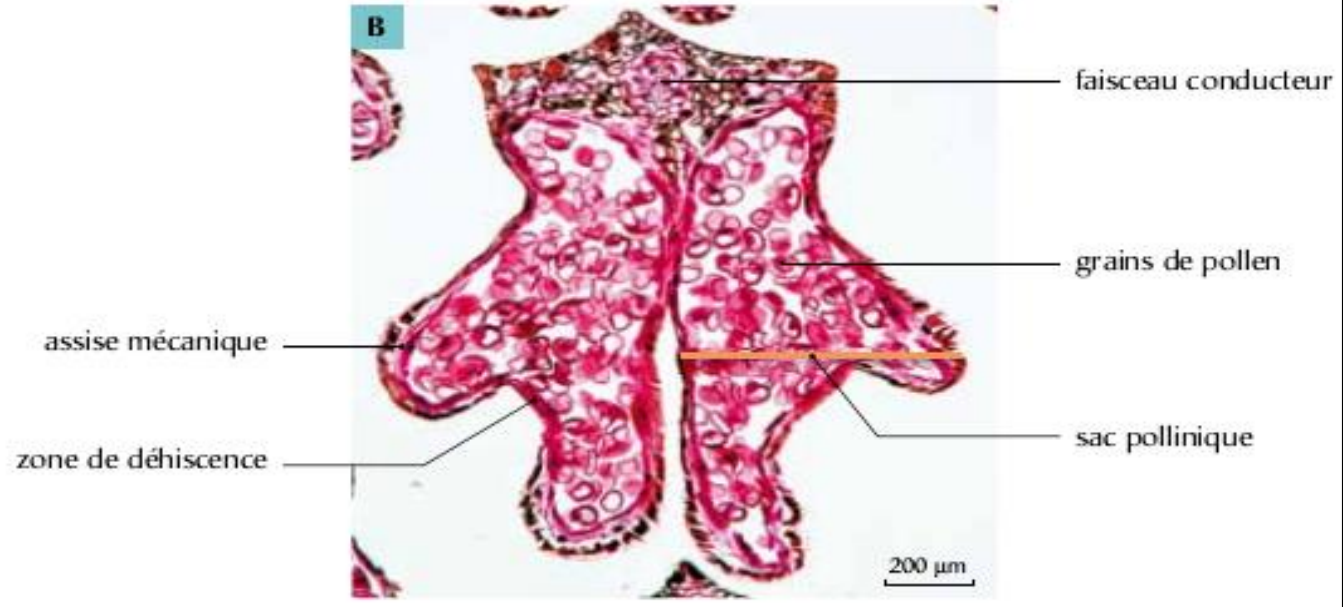


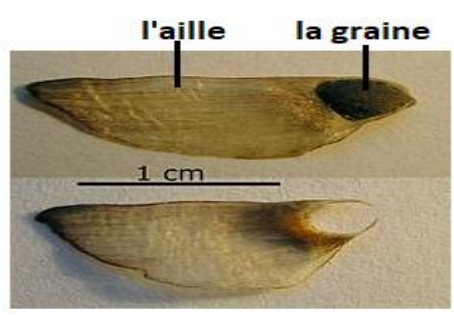
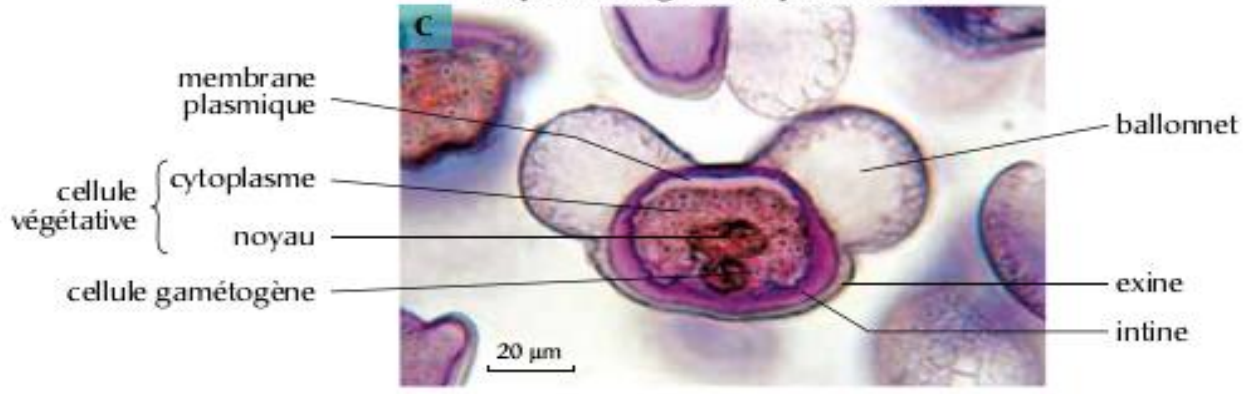
Représentation schématique des étapes de la formation d'un grain de pollen chez le pin



C.T. d'écaïlle staminale

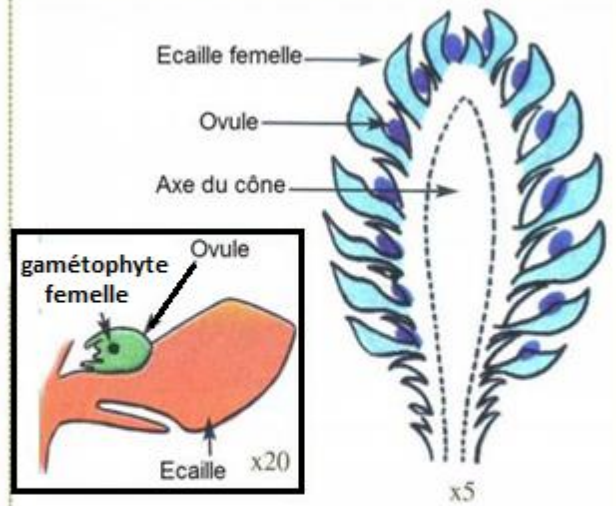
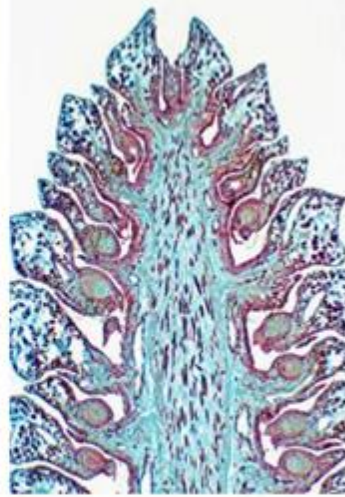


Aspect d'un grain de pollen de Pin

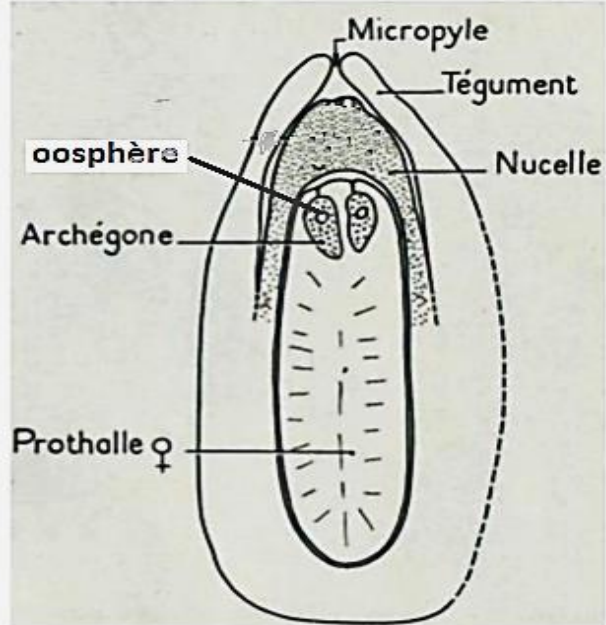
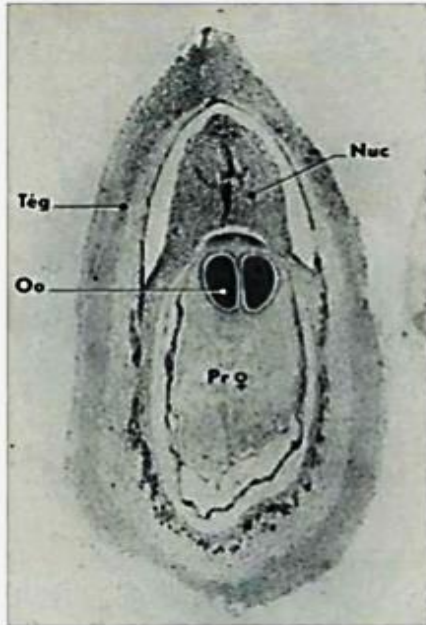




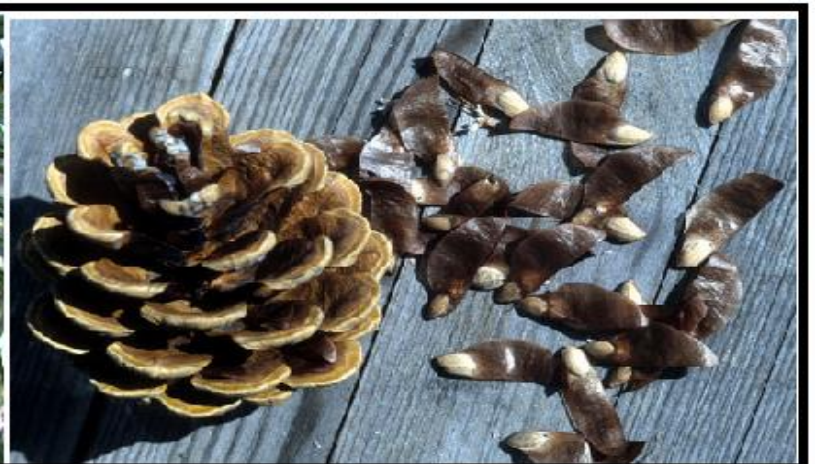
des cônes femelles

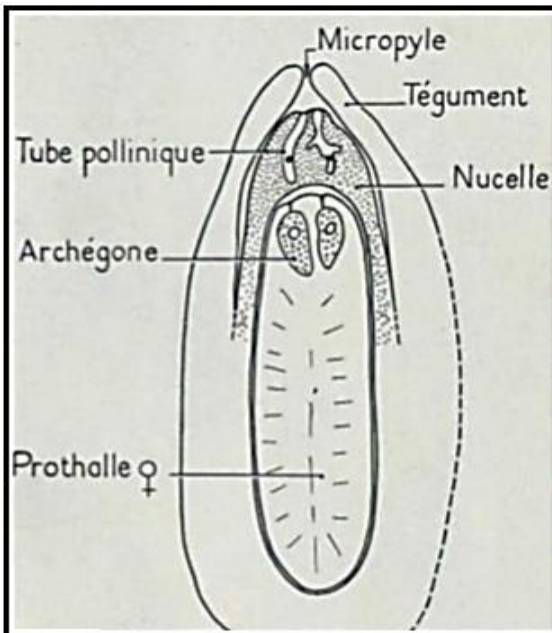


Observation microscopique d'une coupe longitudinale d'un cône femelle et schéma interprétatif

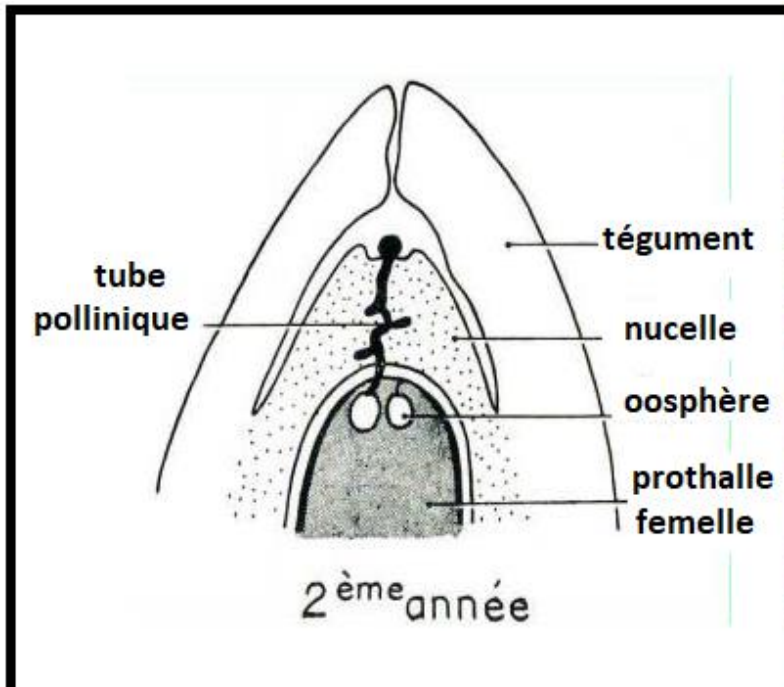


Observation microscopique d'une coupe longitudinale d'un ovule mature et schéma interprétatif.





cône femelle pollinisé



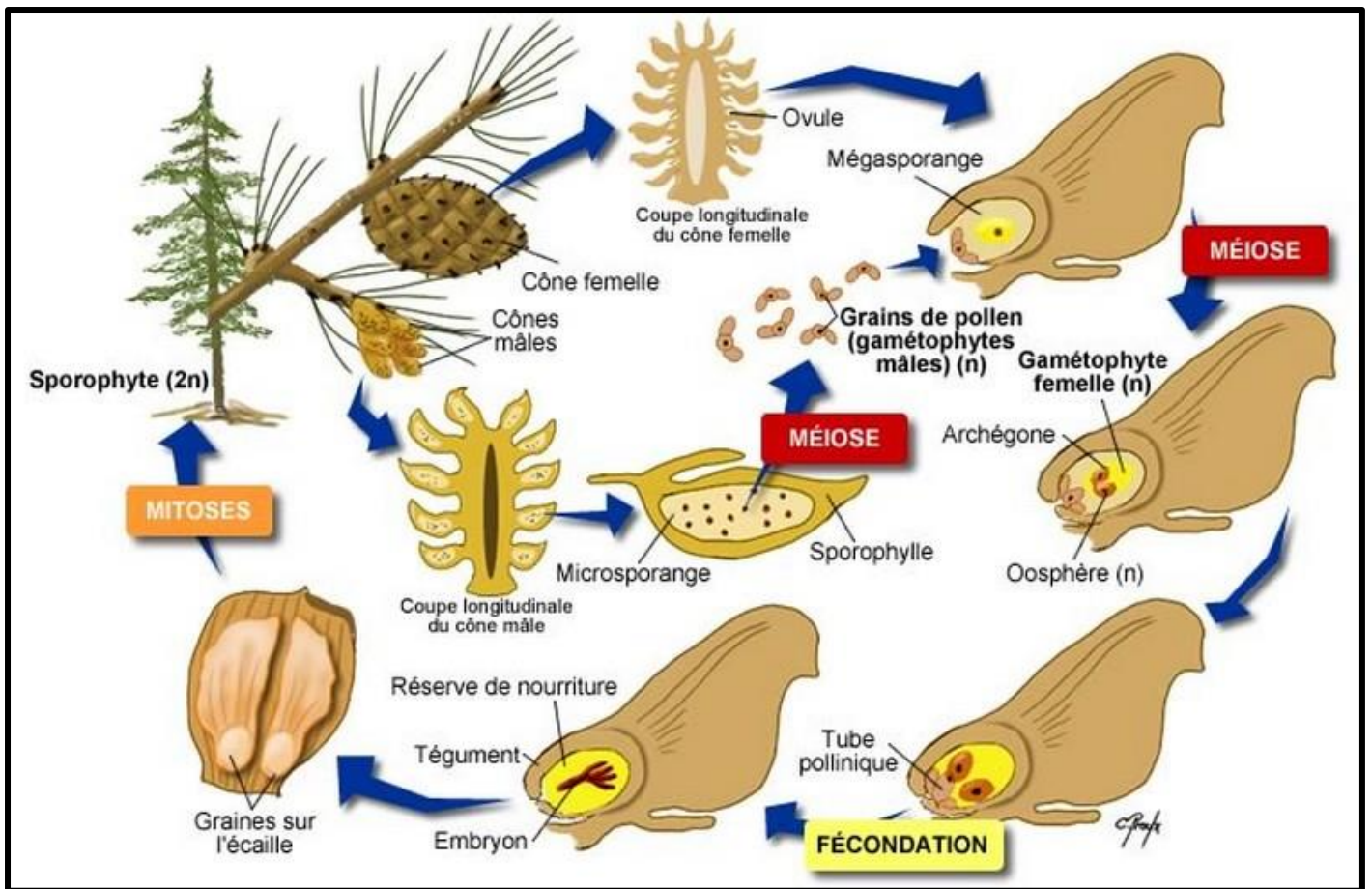
graines de pin



graines de pin décortiquées



gernination des graines de pin



Titre : Cycle de développement
...d'une plante angiosperme...

